

5002B

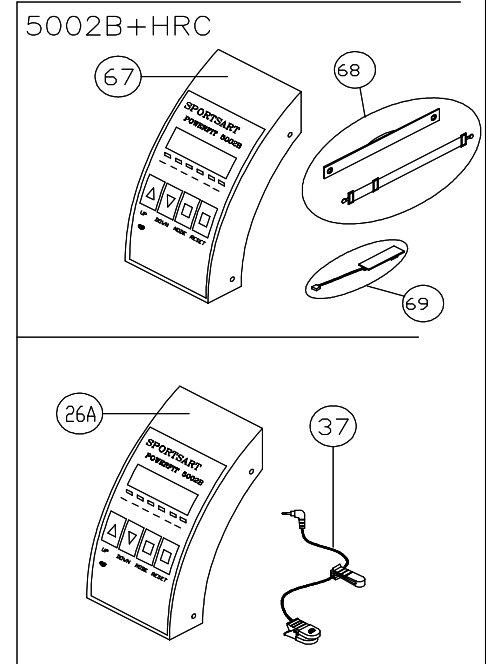
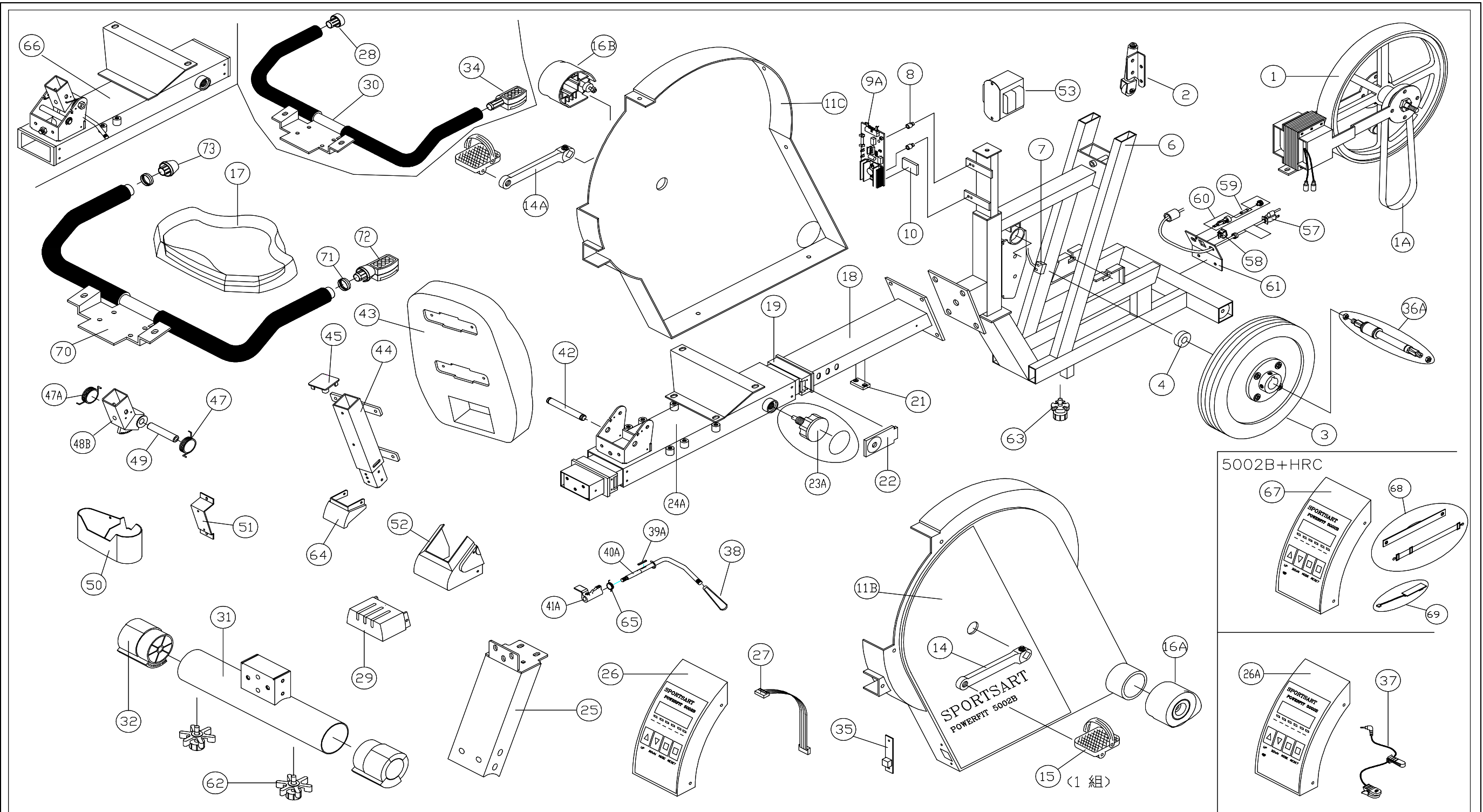
1/23/2007

Bbl#	Description	Qty	Part #
1	Magnet / Flywheel assy	1	5002B-01
1A	Drive belt (#500J7)	1	5002B-01A
2	Belt tensioner	1	5002B-02
3	Drive pulley assy	1	5002-04
*	Hub w/ Bearing	1	5002-04A
4	Bearing - 6202ZZ OR 6202Z-10	2	5002-05
6	Frame	1	5002-10
7	Reed switch	1	5002B-07
8	Stand off for PCB	2	5002-07
9A	Drive board	1	5002B-09A
10	Rubber insulator	1	5002-09
11B	Side cover - Right	1	5002B-11
*	Cover, Right - (internal adapter)	1	5002B-11B
11C	Side cover - Left	1	5002B-11A
*	Cover, Left - (internal adapter)	1	5002B-11C
14	Crank arm - Right	1	5002-17
14A	Crank arm - Left	1	5002-17A
15	Pedals - Pair w/ straps	1	5002-16
*	Pedal straps - Pair	1	5002-16A
16	Transport wheel - (disc. 6/99)	2	7005-26
16A	Front support assy - Right	1	5002-24A
16B	Front support assy - Left	1	5002-24B
17	Seat bottom	1	5002-20
18	Seat rail	1	5002B-18A
19	Seat carriage sleeve	2	5002B-19
21	Seat stop	1	5002B-21
22	Spacer	1	5002B-22
23A	Seat adjust knob	1	5002B-23
24A	Seat carriage	1	5002B-24A
25	Rear support bar	1	5002B-25A
26A	Display (w/o HRC, also see #67)	1	5002B-26
27	Ribbon cable	1	5002-30
28	End cap (disc., see #73)	2	5002-19
29	End cap - rail	1	5002B-29
30	Handlebar (also see #70)	1	5002B-30
31	Support tube	1	5002B-31A
32	Rear stand foot	2	5002-27
34	IR remote (also see #72)	1	5002B-34
35	IR Receiver	1	5002B-35
*	IR receiver wire	1	5002B-35A
*	IR Receiver cover	1	5002B-35B
36A	Spindle	1	5002-37A
*	Spindle Nut	2	NT01-01
38	Adjuster handle	1	5002-39
39A	Pin	1	5002-40
40A	Adjuster lever	1	5002-41
41A	Lock mechanism	1	5002-42
42	Shaft	1	5002-38
43	Seat back	1	5002-52
44	Back support tube	1	5002-51

Bbl#	Description	Qty	Part #
45	End cap - rail	1	5002-50
47	Spring - Right	1	5002-48
47A	Spring - Left	1	5002-48A
48A	Pivot piece	1	5002-46
49	Pivot shaft	1	5002-47
50	Water bottle holder	1	1200-06
51	Water bottle bracket	1	5005-39
52	Cover	1	5002-44
53	Transformer	1	5002B-53
57	Power cord	1	2100-16
58	ON/OFF switch	1	ONSW-01
59	Fuse - 1A, main	1	F1AT-01
60	Fuse holder	1	FSHR-01
61	Mount plate	1	5002B-61
62	Leveler - Rear (since 6/99)	2	2100-72
63	Leveler - Front	1	5002-06
64	Cover	1	5002B-64
65	Spring	1	5002B-65
66	Seat carriage assy complete	1	5002B-66
67	Display w/ HRC	1	5002B-26A
68	Heart-rate strap	1	3100-03
69	Heart-rate receiver	1	5002-36
70	Handlebar w/ grips	1	5002B-30
71	Transition ring	2	5150-47
72	IR Remote	1	5002B-34
*	Remote keypad	1	5002B-34A
73	Handlebar end-cap	1	5150-46

PARTS NOT SHOWN OR DISC

*	Axle - Transp wheels (disc)	1	5002-03
*	Bearing - Flywheel, #6000Z	2	5002-85
*	ECB Magnet	1	5002-93
*	AC Adapter box (disc 6/99)	1	5002B-13
*	DIN adapter cable (disc 6/99)	1	5002B-13A
*	Wire - DIN conn. to drv brd (disc)	1	5002B-13B
*	DIN connector (disc.)	1	5002B-13C
*	Hardware package	1	5002B-80
*	Label - Left sidecover	1	5002B-83
*	Label - Right sidecover	1	5002B-84
*	Wires - Drive board, set	1	5002B-90
*	Keypad & Overlay (disc.)	1	5002B-91
*	Keypad & overlay - HRC	1	5002B-91A
*	Owners manual	1	5002B-OM
*	Magnet (reed switch)	1	5006-14
*	Nut - Crank arm	2	NT01-01
*	Cap - Crank arm	2	5002-17B
*	Tool - Crank arm puller	1	5002-87
*	Rectifier PCB (disc.)	1	5002B-55



變更日期	變更說明	變更者	變更日期	變更說明	變更者
90.10.12	36=36A	設計課	89.8.22	新增 67 68 69	設計課
88.12.6	40A=40B, 取消 46	設計課	90.6.27	取消 54 55 56 修改 9 = 9A	設計課
89.8.18	23=23A	設計課	90.7.4	新增 70 71 72 73	設計課


 力伽實業股份有限公司

製圖 審核	單位	MM	名稱	業務用爆炸圖	圖號	Z-F001B
	合量	1	材質	X	適用機種	5002B
	版本	6				
比例	1/9	投影	第三角法	表面處理	X	